

# Upton Country Park 2

The second phase of Upton Country Park arrives this autumn. If you have been walking between Upton Mill and Upton Valley Way North you will have seen the construction of the cycleways and footpaths.

This phase is focused on nature and the landscape will be left as untouched apart from various paths through the landscape. There will be still sheep grazing on the land and all dogs will have to be kept on the lead.

There will be a viewing area near to the waterfront to allow people to look at the many birds on the lake.

To protect the wildlife and for safety the fencing by the water's edge will still be in place.

The entrance for the Parish will be near to Upton Mill reached by walking along the bridle way from Pineham Barns School towards Upton, marked by the star on the map. The bridle way will be cleared and the encroaching vegetation cut back to make things more accessible.

The Parish Council is working with the Borough Council on the project, primarily on the location and number of bins within the Park.



# Travellers

Over the last 6 months we have had a number of incidents with Travellers which have all been resolved satisfactorily. The long running encampment on the slip road down to the M1 services, just on the Parish boundary, was removed in the early summer with bailiffs being brought in. Once the encampment had been cleared of rubbish, large concrete blocks were placed in the entrance to prevent a reoccurrence of the encampment.

We have had a number of encampments on the land by Pineham Barns School and have developed good links with Prologis which has meant that we are able to notify them as soon as we hear that there is an issue. Prologis are very proactive and obtain the necessary Court order to remove an encampment.

In early August a group of Travellers encroached on land on the Swan Valley Industrial Estate, just off Banbury Lane. They left the area a week later.

The Parish Council works with the County Wide Traveller Unit and land owners to notify them of Traveller incidents and to provide local knowledge of where land boundaries are.



Leading from our work in identifying landowners as part of the Emergency Planning work, we are advised by Prologis, who own the land on which the Travellers have encamped near the School, that they will shortly be putting bunding around that land to prevent Traveller incursions – even if they do manage to move the boulders and break in through the gates!

# Planning

## Upton Valley East

There have been a number of enquiries about the planning application for 34 houses on the land at the top of Upton Valley Way East. The planning application was granted on the 20<sup>th</sup> November 2017.

Under the permission, details of the appearance, landscaping, layout and scale ("the reserved matters"), shall be obtained from the Local Planning Authority in writing before any development is commenced as the permission is outline only.

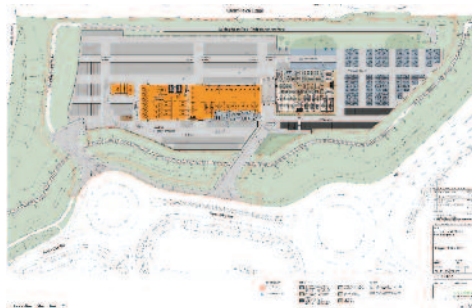
Application for approval of the reserved matters has to be made to the Local Planning Authority before the expiration of three years from the date of this permission.

Which means there is until 20<sup>th</sup> November 2020 for a potential developer to submit detailed plans to the planning office for approval. To date there have been no such applications made, however there is still over a year to go.

## Junction 15a M1

The land on the other side of the canal by Jn 15a is being developed by Guy Salmon / Jaguar Landrover.

This will be a new car showroom with workshops, MOT and service facilities with access from Swan Valley Way.



# Litter Bins

The Parish Council purchased 10 new litter bins for areas of the Parish that have not been covered previously, especially Pineham Village which were installed in early summer.



There are plans for further litter bins for Pineham Village once the house building work permits.



The Parish Council would also like to thank Winvic for their contribution to this project as they have agreed to pay for and install two additional bins in the new Retail area.

One is to be placed near the main entrance to the area and opposite the School so as to be available to those visiting the school and the other at the other entrance / exit to the site on Damselly Road.

# Litter Pick

One of the biggest complaints the Parish Council receives is about litter and mess. Along with providing litter bins for the Parish we also aim to hold at least a couple of community litter picks through the year.

The Parish Council has purchased more litter pick equipment over the summer and we now have enough equipment to run a combined litter pick over the whole Parish on the same day.

We are planning to hold the Autumn Litter Pick on October 5th.



## Banbury Lane

**Banbury Lane** and the surrounding areas will be meeting up in the **children's playground on Banbury Lane at 10:30 am.**

## Pineham Village

**Pineham Village** and the surrounding areas will be meeting up at the **School gateway opposite the Retail Area at 10:30 am.**

We hope to see plenty of people attending. Please come along and help keep our Parish tidy. Gloves and litter pickers will be provided for both litter picks and children are more than welcome to come along and help. The more people who attend the better and the greater the area we can cover.



# SpeedWatch

We continue to work with the Police and the Safer Roads Team to carry out a series of Community Speedwatch sessions in the Parish.

The biggest problem we face is having enough volunteers to run sessions. Currently it is just Parish Councillors that are carrying out SpeedWatch.



Speeding is still one of the biggest complaints the Parish Council receives. However this year we have had absolutely **No Volunteers At All.**

Ideally each session would have at least one Parish councillor and two or more residents, however that is not set in stone. All that is involved is recording of car models and colour, registration numbers and if you feel like it the speed gun operation.

To make the best use of the equipment in the short spells we are loaned it, we need to hold as many sessions as possible - we need residents help to man the sessions, Parish Councillors **cannot** do it all themselves.

## Banbury Lane

This year the sessions were held only on Banbury Lane due to the lack of volunteers and then only for a few sessions in each of the weeks.

## Pineham Village

In order to hold a SpeedWatch session in Pineham Village there needs to be clear signage as to the speed limit. We have been in discussion the Northamptonshire Highways and 30 mph signs will be installed soon which hopefully means we will be able to hold a SpeedWatch session next year.

## Training Sessions

If you wish to volunteer and help, you will need to attend a Saturday Morning Training Session at Caroline Chisholm School, please see details below. Any adult who can stand for around an hour can help, you can commit to as many or as few sessions as you can.

The Safer Roads Team training sessions from Spring onwards so there is plenty of time before we next hold a SpeedWatch session.

If you wish to volunteer or require further information on volunteering please contact Cllr. Stuart Hemming at [stuart.hemming@hunsburymeadows.org.uk](mailto:stuart.hemming@hunsburymeadows.org.uk)

## What is the point of SpeedWatch?

Quite often people ask why we are wasting our time with SpeedWatch? "We need speed cameras on Banbury Lane", "Get the police there and ticket them" or "install speed humps".

The basic answer is money, resources and proof you have a problem.

This is where SpeedWatch comes in. It provides the Police with evidence of the traffic levels and the amount and magnitude of speeding offences in the locations it is held. This information is then available for the allocation of mobile speed units or the consideration of more permanent deterrents such as traffic calming measures.

We have been very successful in the past with SpeedWatch, providing valuable information to the police and enabling them to make contact with offenders and assess the magnitude of the problem.

**Please see back cover for statistics**



# Parish Survey

Over the last 3-4 months the Parish Council has had a survey on the Parish website asking people what their concerns and priorities are.

The top three issues for people were:

**Traffic** (Speeding, Parking, Road Junctions)

**Litter** (Fly Tipping, Dog & General waste)

**Crime and Anti-Social Behaviour**



The Parish Council has worked hard this year to try and address these concerns, some of which we can directly address, others we have to make representations to the relevant authorities and as always the cost of remedial actions is a significant factor in whether changes can be made.

You will see in this newsletter some of the actions and programmes we have undertaken through the year on these concerns.

However a significant limit on what we can achieve is the number of people that are prepared to work to make their community a better place. We need to have the help and engagement from residents to try and address problems.

SpeedWatch and Litter Picks are perfect examples where having more people means the effectiveness of the effort is substantially improved.

**PLEASE VOLUNTEER IF YOU CAN**

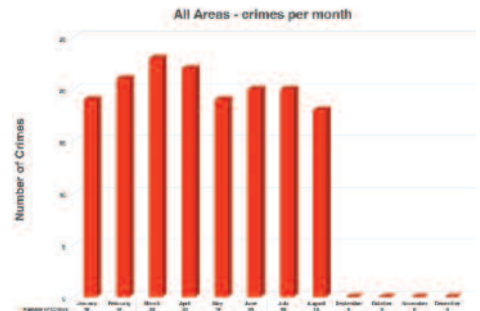
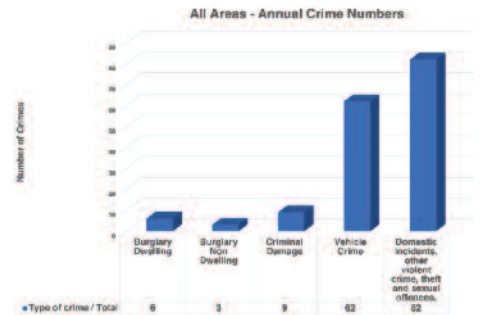
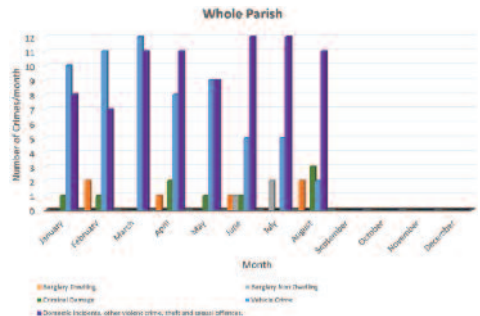
# Crime Figures

The police provide the Parish Council with the crime figures for the Hunsbury Meadows and Pineham Village residential areas, the Swan Valley and Prologis Industrial estates and the south bound motorway service area at Jct 15a.

The Parish is a very low crime area and the Parish Council works closely with the police to ensure the area remains that way.

A detailed breakdown of each months figures from the Police can be found on the Parish website

[www.hunsburymeadows.org.uk/police-and-crime.html](http://www.hunsburymeadows.org.uk/police-and-crime.html)



# 87 Bus Route

The figures from the first year of the 87 route are in and they show that the number of passengers on the route have increased by approximately 50% on last year.

There have been a number increases in the stops on the route to include Brackley and Silverstone at certain times of the day.

The route is being reviewed with a view to making it more flexible and useful if at all possible. An such changes would take effect in January 2020.



Towcester • Greens Norton •  
Hunsbury Meadows • Northampton

87

MONDAYS TO SATURDAYS except Public Holidays			
Brackley Market Place	0644		
Brackley Turweston Rd North	0649		
Silverstone White Hart	0700		
Towcester Tesco/A5	▼	1004	1245
Towcester Brackley Road	▼	1008	1247
Greens Norton Butchers Arms	0710	1017	1256
Duncote Main Street	0712	1020	1259
Astcote Main Street	0717	1025	1304
Pattishall Church Street	0720	1028	1307
Fosters Booth Butchers Lane	0723	1031	1310
Eastcote Greenway	0726	1033	1312
Rothersthorpe Banbury Lane	0733	0851	1040 1319
Hunsbury Meadows Banbury Lane	0737	0855	1044 1323
Pineham Village	0739	▼	▼
Sixfields Football Ground	0744	0900	1048 1327
Sainsburys Gambrel Road	0745	0901	1049 1328
Northampton Rail Station	0751	0907	1055 1334
Northampton The Drapery	0755	0911	1059 1338

# Closure of DogWatch

In the Autumn 2018 newsletter we

covered Dogwatch, an initiative to allow dog walkers to report any issues or problems that they noticed while out walking their dogs. The

scheme has been running since 2011 but unfortunately the scheme has had to close due to a lack of administrative support.

However dog walkers, general walkers, runners etc can still report anything unusual or problems to your local Neighbourhood Watch. To find out if you have a scheme on your street go to the website

[www.northantsnhw.co.uk](http://www.northantsnhw.co.uk)  
or report issues directly to the police via  
<https://www.northants.police.uk>



Northampton • Hunsbury Meadows •  
Greens Norton • Towcester

MONDAYS TO SATURDAYS except Public Holidays			
Northampton The Drapery bay 19	0918	1340	1750
Northampton Rail Station	0921	1344	1754
Sainsburys Gambrel Road	▼	1349	1759
Sixfields Football Ground	▼	1350	1800
Hunsbury Meadows Banbury Lane	0930	1355	1805
Rothersthorpe Banbury Lane	0933	1359	1809
Eastcote Greenway	0940	1406	1816
Pattishall Church Street	0942	1408	1818
Fosters Booth Butchers Lane	0944	1410	1820
Astcote Main Street	0948	1414	1824
Duncote Main Street	0952	1420	1830
Greens Norton Butchers Arms	0957	1424	1834
Towcester Tesco/A5	1004	1429	▼
Towcester Brackley Road	1008	▼	▼
Silverstone White Hart			1848
Brackley Turweston Rd North			1858
Brackley Market Place			1903

times in red run Mondays to Fridays only

# Emergency Planning



Residents may recall that we secured a Flood Risk Report for the older part of the Parish area, largely Hunsbury Meadows and Pineham Lock, in 2018. This was very valuable in highlighting potential problem areas or points such as culverts, flood ponds and drainage ditches that require monitoring to reduce what is mainly surface water flood risk, in the area reviewed.

Already we have thus highlighted some issues to some landowners, notably on the Pineham Lock development, that required attention. We are pleased to report however that Civil Engineer's Report did not throw up anything of significant concern – at least as of last year!

More relevantly, we have now had approval for our application to have the remaining, larger, and perhaps most vulnerable part of the Parish, Pineham Village, Swan Valley and the land west of the canal, assessed.

Sadly the Civil Engineer's responsible for doing the survey has advised us that this may not be until the Spring of 2020.

In the meantime, and since it is the landowner's (called "Riparian Owners") responsibility to maintain drainage ditches, culverts and structures across their land, a major project in progress by the Parish Council is the identification of all relevant landowners responsible for the open areas in the Parish.

Once we know these, and indeed have the second Flood Risk Report, we can seek to set up a monitoring system for each of the identified potential flood risk points in the Parish. Sadly, simple Land Registry searches for Swan Valley are proving to be less than revealing when it comes to identifying which body or company is actually responsible for maintenance of the land!



From this work, we hope to also develop good working relationships with all of the landowners and interested parties so that together we can make the entire Parish area a cleaner and importantly, a safer environment for everyone. After all, we are all aware we live on the edge of a large Flood Plain. If we do not ensure that the drainage arrangements are maintained, we are all at higher risk of a flood event.

We shall therefore continue to keep residents informed of the progress of what is a large ongoing project via our Newsletters, especially since it will eventually lead to the development of an Emergency Plan for the Parish to cover any emergency – not just flooding - which may affect the safety of our residents.

On a practical note, once we are clearer on land ownership and where to send problems we identify, then **We will need volunteers.** Perhaps dog walkers and those who walk across the open land in the Parish – to act as "Flood Wardens" to alert us to potential maintenance issues so that the appropriate "Riparian Owner" can be engaged to fix them! This will be a case of simply checking identified points in passing – nothing onerous and with no burden on any one's time!





# Parking Issues

This item is always in the newsletter, but it continues to be a serious problem across the Parish. The Community Facebook pages of the various areas of the Parish are full of posts complaining about congestion, poor and inconsiderate parking.



If you have to park your car with two wheels on the pavement, please be sure that you leave sufficient room for a person with a push-chair to get through. Completely blocking the footpath is an offence.

Please park sensibly and if possible, park commercial vehicles away from the estates. Use any garages, driveways and parking spaces provided. This isn't just to make life easier for residents, emergency vehicles must be able to get through. It is not acceptable just to leave a gap that even private car struggles to get by.

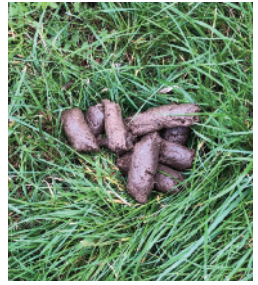


The police have been requested to assess the situation and they will act in any instance where inappropriate parking causes a blockage. It is essential to leave enough space at all times for emergency vehicles, if people are having problems driving down roads imagine how much of an issue it would be for a fire engine!

**The police will take action against offenders.**

# Dogs

Please can dog owners clear up after their dogs.



The Parish Council have provided 10 new waste bins this year, taking the total number of bins in the the Parish to 20 and still we are getting piles of dog waste all over the place, often just feet away from a bin!

Dog waste is a health hazard as well as being unsightly and unpleasant to look at.

**Remember all the bins can be used for all types of waste.**

# Problem Vehicles

There have been instances where vehicles have been parked in various parts of the Parish for extended periods of time and residents have complained to both the Parish Council and the Police about them.

If the vehicle is parked legally and not causing an obstruction then there is **NOTHING** the Parish Council or Police can do about it. Even if the vehicle has no tax, MOT or insurance the Police cannot act without instruction from the DVLA or unless the tax is more than 61 days out of date. If the police catch the vehicle driving that is a different situation.

On some developments there may be a Restrictive Covenant regarding parking in place between the developer and residents,, these only apply if the owner of the vehicle is a homeowner on the estate.

The Parish Council is not party to these Covenants and has no power to act in these situations.



# Canal News

The Canal and River Trust along with the Inland Waterways Association have installed an information panels near to Locks 17.



Lock 14 is just by the bridge over the canal on Banbury Lane and a small section of footpath was also constructed to allow people to view the information panel easily



## Canal Mural

Rothersthorpe Primary School painted a second mural depicting the "Canal Through the Seasons" under the M1 bridge in June. the design was by the Blisworth Art Group with the CRT providing essential equipment and managing the effort.



This mural follows on from the first one, done last Summer, on the towpath side of the canal by Delapre school children



Richard Parry, the CEO of CRT unveiled the mural on the 13th July and paid special thanks to Sandie Morton and Geoff Wood for co-ordinating the project, getting it done, and organising opening ceremony.



Further information can be found at: [www.waterways.org.uk/northampton/](http://www.waterways.org.uk/northampton/)



## SOUTH NORTHANTS COMMUNITY RESPONDERS

Parish Council was happy to provide a grant of £500 to South Northants Community Responders to go towards a response bag which contains essential first aid equipment along with oxygen and an Automated External Defibrillator (AED)



South Northants Community Responders are a charity providing highly trained individuals who operate as a charity under the governance of East Midlands Ambulance Service NHS Trust. The aim is to provide emergency medical care until the professional services arrive. Responders attend serious/life threatening calls.

We have a First Responder living in the Parish and she received the cheque from the Chair of the Parish Council.



Further information on South Northants Community Responders can be found at <https://southnorthantsresponders.co.uk>

# Fault & Problem Reporting

The Parish Council have created a TRIAL Fault & Problem reporting page on the Parish website. The trial will run for 6 months and the page is live.

This will be for situations where people have already reported problems to the relevant organisations such as a developer, management company, Northampton Borough Council, Northamptonshire County Council, Northamptonshire Highways etc. and the problem has NOT been resolved in a satisfactory or timely manner.

The Parish Council then will look to move matters along and obtain a resolution to the problem.

The Parish Council is NOT the primary point of contact for issues and problems but we are sometimes able to facilitate action.

### Fault and Problem Reporting

Please enter in the details of the problem/fault in the below form.  
Please try and supply as much detail as possible as this will make it much easier for the Parish Council to identify the problem with the relevant organisation.

**Required Field**

Recorded by:   
Please enter your name

email:   
Please enter your email address so we can contact you

Phone Number:   
Please enter a contact phone number (optional)

Type of problem:   
Please select the general type of problem

Description of the problem:

Location of the problem:   
Please locate where the problem is, Street name, street numbers etc. If there is a map proof ready provide number

Responsible Organisation:   
Please select which is the responsible organisation

Date required to resolve:

Reference/Case Number:   
Please enter any reference or case number from the organisation that you have recorded the problem to

Expected Completion Date:

Note: If the organisation require you a completion date please supply it

The page can be found on the Parish website at [www.hunsburymeadows.org.uk/xxxxx.html](http://www.hunsburymeadows.org.uk/xxxxx.html)

# HMOs

## Houses in Multiple Occupation (HMOs)

A house in multiple occupation or HMO is a house which is occupied by people who do not form a single household. This includes:

- A house let as individual bedsitting rooms
- A group of rooms on each floor let to single occupants
- Hostels, some hotels and guesthouses
- Lodgings and shared houses
- Houses converted into self-contained flats

All houses let in multiple occupation must be properly managed in accordance with The Management of Houses in Multiple Occupation (England) Regulations 2006 SI 2006/372 and comply with local authority conditions.

There have been concerns expressed to the Parish Council that there are properties that appear to be HMOs.

Both landlords and their tenants have responsibilities relating to the tenancy and the maintenance of the property.



The Private Sector Housing Department in Northampton Borough Council are working hard to identify HMOs within Northampton to ensure they are adequately managed and also meet the fire safety and amenity standards required.

Although extensive surveillance work is carried out by the Dept. there are inevitably some premises which go unidentified; therefore information and support from local residents and businesses is invaluable to supplement their work.

If you have any concerns or suspect that a property in the borough may be operating as a HMO please report it to Private Sector Housing on:

0300 330 7002 or  
email [pshs@northampton.gov.uk](mailto:pshs@northampton.gov.uk)

Please provide as much information about the address as possible; for example: property owner or agent details, the number of storeys/floors, the number of occupants or any other concerns you may have and it will be investigated. All reports received will be treated confidentially.

## Taylor Wimpey

While Pineham Village Phase Three is being completed the Parish Council has been working to address site wide issues that are concerning residents. This includes things like blocked drains, weeds, street lighting etc.

Eventually, like Pineham Lock, the estate management company will be taking more responsibility for such matters until the land is handed over.

We would encourage people to report issues to the management company, Encore Estate Management Limited, directly and only contact the Parish Council via the Fault and Problem page on the Parish website if there are issues

All enquiries should be directed to the Legal Department at EPMG Legal Limited  
2 Hills Road  
Cambridge  
CB2 1JP  
Email: [lepl@epmeroup.co.uk](mailto:lepl@epmeroup.co.uk)  
Tel: 01223 866 980 (option 3)

# Who to Contact with an Issue

## Police/Crime

In an emergency ring 999. In non urgent situations use 101. However it can take time to be answered so it may be easier to do it online.

### Reporting a crime:

<https://www.northants.police.uk/webform/report-crime>

### Reporting intelligence:

<https://www.northants.police.uk/webform/intelligenceinformation-giving-form>

### Suspicious circumstances:

<https://www.northants.police.uk/webform/suspicious-activity>

### Action Fraud:

<https://www.actionfraud.police.uk/>

### Problem with the roads:

<http://www.northamptonshire.gov.uk/en/councilservices/Transport/roads/StreetDoctor/>

### Report a faulty street light:

[http://www.lightingnorthamptonshire.com/report\\_fault.aspx](http://www.lightingnorthamptonshire.com/report_fault.aspx)

### Borough Council issues such as:

- Litter
- Fly Tipping
- Bus stop/street sign cleaning
- Dead Animal
- Dog Fouling
- Flyposting
- Graffiti
- Leaf Clearance
- Litter bin overflowing
- Weed Clearance
- Broken Glass

<http://selfserve.northampton.gov.uk/mycouncil/reportIt.html>

# Anti-social Behaviour

If you are the subject of anti-social behaviour, or a problem has been identified within the community you live, what options are open to you?

If you feel that you are the best person to resolve the issue, then do so when you are calm, as tempers can easily flare and cause the issue to become more serious, rather than help you to agree and reach an amicable solution.

If people fail to listen to your concerns, or show a less than responsible attitude towards you, then the issue will require another form of intervention.

If the problem is occurring on a daily or frequent basis, it will assist the police or other agencies if relevant information referring to the problem is kept in diary form. This should include times, dates and the nature of the incident, and if known, the identity of the offender and how it made you feel at the time.

## Organisations

### Housing Associations:

If the person who is causing a problem is a council tenant, consider consulting with the housing provider.

### Borough or County Councils:

Environmental Health and Community Safety departments are located within the councils across the county and can provide advice regarding persistent noise nuisance, air pollution and public health issues.

This is not an area that the Parish Council can become involved in



# Parish Vacancies

In August Councillor Alan Maskell retired from the Parish Council as he and his wife retired to a new home in Wiltshire. We wish Alan all the very best in this new phase of his life and would like to thank him for all his hard work as Finance Officer for the Parish Council. Alan has contributed immensely to the Parish Council and represented concerns of the residents of Pineham Lock as Chamonix Ltd started taking over aspects of managing Pineham Lock

This does mean that we now have a vacancy for a Councillor, so if anyone is interested in becoming a Parish Councillor let our Clerk know so we can contact you.

# Electoral Registration

Who knows whether there will be any elections or referenda within the next twelve months. One thing is certain; if you are not on the electoral list, you will not be able to vote. Now is the time to check. If you are not sure, and this particularly applies to all of our newest residents in Pineham, contact the Guildhall Electoral Registration or check online.

# Damaged Hedgerows

Over the year we have had a number of cases where home owners have damaged hedgerows near or adjacent to their properties. This has occurred on Northampton Borough Council land and on land managed by a management company which is 'common land' for all residents.

People are allowed to trim back branches of leaves and shrubs that overhang their boundary line but they are not allowed to go further. Also such trimming should not be sufficient to kill the plant.

If further cutting or maintenance is required then residents should write to either their Management Company for Pineham Village and Pineham Lock (Encore and Chamonix, respectively) or in the case of Northampton Borough Council owned land – the Planning Department Arboriculture, at Northampton Borough Council.

It is not acceptable for people to trim plants outside their boundary. This is vandalism and will be treated as such by the authorities.

# Helping **YOUR** Community

## ADVERTISE IN THIS NEWSLETTER

The Parish Council is keen to provide a facility for local tradesmen, businesses or charities to advertise in this newsletter which is distributed to every household in the Parish, whilst at the same time helping the Council to reduce production costs.

Adverts are available from £24 per issue,  
please contact the Council to discuss your requirements  
[clerk@hunsburymeadows.org.uk](mailto:clerk@hunsburymeadows.org.uk)



We specialise in:

- ✓ General Building Works
- ✓ Extensions
- ✓ Electrical Works
- ✓ Warm Roofs
- ✓ Flooring
- ✓ Windows, Doors & Conservatories

- ✓ Kitchens
- ✓ Bathrooms
- ✓ Plumbing
- ✓ Plastering
- ✓ Tiling
- ✓ Paving

Office: 01604 589524

Mobile: 07971 646914

Email: [mike.harris@hpslworks.co.uk](mailto:mike.harris@hpslworks.co.uk)

KG Business Centre, Kingsfield Way,  
Northampton NN5 7QS

**highfields**  
property services ltd

[www.hpslworks.co.uk](http://www.hpslworks.co.uk)

# USEFUL NUMBERS

## Emergency Numbers

Police, fire or ambulance	999
Electricity	0800 6783 105
Gas (24 hr)	0800 111 999
Water (24 hr)	08456 145 145
The Samaritans	08457 90 90 90
Social Services (out of hours)	01604 626938

## Advice & Information

Age UK	01604 611200
Alcoholics Anonymous	0845 7697555
Citizens Advice Bureau	0844 4111 4444
Crime Stoppers	0800 555 111
National Drugs Helpline	0800 776600
NHS Choices	111
General Hospital	01604 634700
Sleeping Rough	01604 629804
Community Law Service	01604 621038

## USEFUL WEBSITES

### Report a Crime

<https://www.northants.police.uk/ro/report/ocr/af/how-to-report-a-crime/>

### Report Rubbish & Graffiti online

<https://www.northampton.gov.uk/info/259/environmental-health>

### Report problems with Potholes

#### Street signs etc. online

<http://www.northamptonshire.gov.uk/en/councilservices/Transport/roads/StreetDoctor>

## Northampton Borough Council

All Council Services  
(Standard Rate) 0300 330 7000

Waste and recycling collections are provided for Northampton Borough Council by Veolia recycling@northampton.gov.uk or visit [www.northampton.gov.uk/recycling](http://www.northampton.gov.uk/recycling)

## Out-of-hours

Stray dog out-of-hours 01604 837999  
To report other complaints e.g. noise, please leave a message on 01604 838000. This will be dealt with on the next working day.

## Northamptonshire County Council

Switchboard 0300 1261000  
School transport. 01604 236132  
Street Doctor (Roads/Lighting) 0845 6011113  
Trading standards 08454 040506

## Ways to keep in touch with us:

Website: [www.hunsburymeadows.org.uk](http://www.hunsburymeadows.org.uk)

Email: [clerk@hunsburymeadows.org.uk](mailto:clerk@hunsburymeadows.org.uk)

Phone: 01604 891033 / 07876 016581

Clerk: Mr Lalitkumar Patel, 52 Meadow Lane, Little Houghton, Northampton NN7 1AH



Facebook: HunsburyMeadows  
Twitter: @HunsburyMeadows

# SPEEDWATCH in numbers 2019

**1**



**vehicle recorded  
travelling  
35mph or above**

**EVERY 4 MINUTES**



**20 vehicles recorded travelling  
at 35mph+ in 1 HOUR**



**TOP SPEED**

**49mph**

Above figures based on data recorded during Hunsbury Meadows Speedwatch sessions held on Banbury Lane in 2019 and available at time of publishing this information.