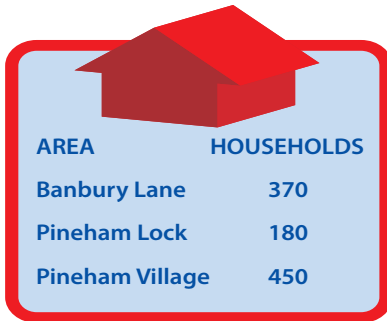


# What do you want from your Parish?

Hunsbury Meadows Parish was formed in the last Local Governance Review in 2013 and will be six years old in May 2019. After the boundary change on the 1<sup>st</sup> April 2019 the Parish will approximately double in area and population.



AREA	HOUSEHOLDS
Banbury Lane	370
Pineham Lock	180
Pineham Village	450

During this time the needs and requirements of our residents have grown and we periodically ask our parishioners what they would like to see their Parish Council focusing on in the future.

Over the last couple of years the Parish Council has been focusing on these areas:

- Parking issues
- Speeding issues
- Crime reduction
- Litter. Providing dog & general waste bins and organising litter picks
- Supporting the No. 87 Bus route
- Representing parishioner's concerns to management companies in new housing developments
- Developing the Parish infrastructure, footpaths, play areas etc
- Community events (Party in the Park)
- Representing the Parish at Borough and County level

We need to know if these are still the priorities for the Parish as a whole, especially with the expansion of the Parish.

There is a survey on the homepage of the Parish website which we encourage people to fill in, [www.hunsburymeadows.org.uk](http://www.hunsburymeadows.org.uk), or you can contact us via email at [clerk@hunsburymeadows.org.uk](mailto:clerk@hunsburymeadows.org.uk).

From previous surveys that the Council have carried out the top issues for people have been:

1. Parking problems
2. Speeding
3. Crime
4. Litter and dog waste

Which is why, as you will see from this newsletter, the Council have made these the focus of our efforts. But we need to know if this is still the case.

People also have to realise that there are areas where responsibility is with either the Borough or County Council, or where the Parish Council has no authority or just not the funds to do something.

In this newsletter we have included a piece to explain the role, duties of a Parish Council and also the constraints on it.

# What is a Parish Council

A Parish or Town Council is a civil local authority found in England and is the first tier of local government. It is an elected body, with variable tax raising powers and responsibilities for areas known as civil parishes which is different to Church of England ecclesiastical parishes and their Parochial Church Councils.

As it is the authority closest to the people, Parish Councils are generally the first place people will go with concerns or issues and they are a vital part of the community.

Generally Parish Councils have limited powers to make decisions. But they do have the ability to negotiate with, and the power to influence, those other organisations that do make the final decisions (such as the Borough and County Councils, police etc). In this respect Parish Councils are extremely powerful. A Parish Council gives the best reflection of how a community feels about something, and its views will be taken seriously.

Parish Councils have the power to tax their residents to support their operations and to carry out local projects. This is called the “precept” and is collected as part of the Council Tax. Although there is no limit to the amount that can be raised, the money can only be raised for a limited number of purposes.

Parish Councils make all kinds of decisions on issues that affect the local community. The most common topics that Parish Councils get involved with are planning matters (they are statutory consultees), crime prevention, managing open spaces and campaigning for and delivering better services and facilities.

# Powers of a Parish Council

Parish do have duties and wide range of legal powers which have been granted by Parliament. Some of the relevant powers and duties of Parish Councils which apply to our Parish are listed below;

- Allotments. Power to provide allotments. Duty to provide allotment gardens if demand unsatisfied and if reasonable to do so.
- Bus Shelters. Power to provide and maintain bus shelters.
- Bye-laws – the power to make bye-laws concerning: baths and washhouses (swimming pools), cycle parks, mortuaries and pleasure grounds.
- Community Centres. Power to provide and equip buildings for use of clubs, having athletic, social or educational objectives. Power to acquire, provide and furnish community buildings for public meetings and assemblies.
- Crime prevention, Power to spend money on crime detection and prevention measures.
- Drainage. Power to drain and maintain ponds and ditches to prevent harm to public health.
- Entertainment and the Arts. Provision of entertainment and support of the arts.
- Environment. Power to issue fixed penalty notice for litter, graffiti and offences under dog control orders.
- General Spending. Parish Councils can spend a limited amount of money on anything they deem of benefit to the community that is not covered by the other specific responsibilities described in this list.
- Gifts. Parish Councils may accept gifts.



- Highways. Power to repair and maintain public footpaths and bridleways. Power to light roads and public places. Power to provide parking places for vehicles, bicycles and motor cycles. Power to enter into an agreement as to dedication and widening. Power to provide roadside seats and shelters. Power to consent to a local highway authority stopping maintenance of a highway or stopping up / diverting a highway. Power to complain to district council about the protection of rights of way and roadside waste. Power to provide certain traffic signs and other Notices.
- Power to plant trees etc. and maintain roadside verges.
- Land. Power to acquire land by agreement, to appropriate land and to dispose of land. Power to accept gifts of land.
- Litter. Provision of litter-bins and support for any anti-litter campaigns.
- Neighbourhood planning. Powers to act as lead body for a neighbourhood development plan or a neighbourhood development order.
- Newsletters. Power to provide information relating to matters affecting local government.
- Nuisances: Power to deal with offensive ditches.
- Open Spaces. Power to acquire and maintain land for public recreation. Power to acquire and maintain open spaces.
- Planning. Right to be notified of planning applications if right has been requested.
- Public conveniences – provision and maintenance of public toilets.
- Recreation. Power to provide recreation grounds, public walkways, pleasure grounds, open spaces, village greens, gymnasiums, playing fields, holiday camps and boating ponds.
- Traffic Calming. Power to contribute financially to traffic calming schemes.
- Transport. Powers to spend money on community transport schemes.
- Websites. Power for Councils to have their own websites.

# Litter Picks

With the boundary change occurring on 1<sup>st</sup> April 2019, the Parish will be too large to hold a single litter pick across the whole Parish as we do not have enough equipment or Councillors to help out.

We are planning to hold separate Spring litter picks in March and April 2019.

## Banbury Lane Litter Pick



We will be holding the usual litter pick for **Banbury Lane** and surrounding areas on **Saturday 30<sup>th</sup> March** and we hope to see plenty of people attending. Please come along and help keep our Parish tidy. Could all volunteers please meet up in the **children's playground on Banbury Lane at 10.30 am.**

## Pineham Village Litter Pick



We will be holding what we hope will be a regular litter pick for **Pineham Village** on **Saturday 13<sup>th</sup> April.** Anyone wanting to volunteer to help tidy up where you live please meet at the entrance to **Pineham Barns School at 10.30am.**



**Gloves and litter pickers will be provided for both litter picks and children are more than welcome to come along and help. The more people who come along the better and the greater the area we can cover.**

**30**

# SpeedWatch

**30**

Speeding is one of the biggest complaints the Parish Council receives. We have worked with the Police and the Safer Roads Team over the last couple of years to carry out a series of Community Speedwatch sessions in the Parish.



In the previous two years we have recorded, just along Banbury Lane, over 1300 vehicles going 35 mph or faster in a 30 mph limit. The fastest speed recorded was 57 mph with the average being 37 mph.

## Banbury Lane

This year the sessions on Banbury Lane will be held in the late summer and we are looking for volunteers to help our Councillors please see details below.

## Pineham Village

We are also in contact with the Safer Roads Team to hold Speedwatch sessions in Pineham Village. We will shortly be surveying the estate with the Police for possible enforcement locations, if you have knowledge of which roads and locations have issues please let us know about them.

We have been very successful in the past with these sessions, providing valuable information to the police and enabling them to make contact with offenders.

## Volunteers

To make the best use of the equipment in the short spells we are loaned it, we need to hold as many sessions as possible, this is where we need residents help to man the sessions, the larger pool of volunteers we have the more sessions we can hold. If you wish to

volunteer and help, you will need to attend a Saturday Morning Training Session at Caroline Chisholm School please see details below. Any adult who can stand for around an hour can help, you can commit to as many or as few sessions as you can manage, each session will have at least one councillor and two or more residents and you will be able to help with speed gun operation, recording of car models and colour, registration numbers and driver details.

## Training Sessions

The Safer Roads Team will be holding training sessions on the following Saturday Mornings at Caroline Chisholm School in the Lecture Theatre.

## Pineham Village

The preferred dates are:  
23<sup>rd</sup> April 2019 or 4<sup>th</sup> May 2019

## Banbury Lane

The preferred date is the 27<sup>th</sup> July 2019

If you wish to volunteer or require further information on volunteering please contact Cllr. Stuart Hemming at  
[stuart.hemming@hunsburymeadows.org.uk](mailto:stuart.hemming@hunsburymeadows.org.uk)

## Traffic Information

### Roadworks

Information of current roadworks can be found at:

<https://northamptonshire.roadworks.org>

### SmartMove

Live travel information for Northamptonshire  
<https://www.smartmovenorthamptonshire.net>

# Parking Issues

# 87 Bus Route

This item is always in the newsletter, but it continues to be a serious problem across the Parish. The Community Facebook pages of the various areas of the Parish are full of posts complaining about congestion, poor and inconsiderate parking.



If you have to park your car with two wheels on the pavement, please be sure that you leave sufficient room for a person with a push-chair to

get through. Completely blocking the footpath is an offence.

Please park sensibly and if possible, park commercial vehicles away from the estates. Use any garages, driveways and parking spaces provided. This isn't just to make life easier for residents, emergency vehicles must be able to get through. It is not acceptable just to leave a gap that even private car struggles to get by.



The police have been requested to assess the situation and they will act in any instance where inappropriate parking causes a blockage. It is essential to leave enough space at all times for emergency vehicles, if people are having problems driving down roads imagine how much of an issue it would be for a fire engine!

**The police will take action against offenders.**

The Parish Council voted in December 2018 to continue funding the No. 87 bus route for the financial year 2019-2020. This is in conjunction with the other Parish Councils the route goes through.

The Parish Council will review passenger numbers for the service through the year and the ongoing cost in a years time.

The route has now been extended to include a stop at Sainsbury's at Sixfields.

Townsend + Greens Norton + Hunsbury Meadows + Northampton		87	Northampton + Hunsbury Meadows + Greens Norton + Towcester	
MONDAYS TO SATURDAYS except Public Holidays			MONDAYS TO SATURDAYS except Public Holidays	
Worcester Station	0700		Northampton The Deansway Bus Stop	0716 0702 0708
Towcester Station	0700		Northampton East Station	0707 0703 0713
Worcester Bus Stop	0700 0705		Towcester Central Bus Stop	0700 0705 0710
Greens Norton Bus Stop Area	0710 0717 0706		Sixfields Bus Stop Covered	0700 0655
Elmwood Road Bus Stop	0712 0650 0700		Hunsbury Meadows Bus Stop Area	0650 0655 0655
Alvord Hill - Bus Stop	0717 0625 0714		Witchington Bus Stop Area	0653 0650 0655
Witchington Bus Stop Area	0650 0650 0700		Witchington Green	0650 0610 0610
Posters Booth - Bus Stop Area	0723 0631 0720		Witchington Church Lane	0642 0610 0610
Witchington Green	0650 0650 0700		Witchington Bus Stop Area	0640 0610 0610
Witchington Green Lane	0724 0651 0640 0720		Witchington Bus Stop	0640 0610 0614
Hunsbury Meadows Bus Stop Area	0717 0655 0640 0720		Witchington Bus Stop	0642 0610 0610
Posters Booth	0720 *		Greens Norton Bus Stop Area	0702 0614 0614
Sixfields (Covered)	0744 0650 0640 0737		Towcester Station	0604 0620
Witchington Covered Bus	0745 0651 0650 0738		Towcester Station Road	0605 0640
Northampton Station	0745 0657 0655 0744			
Northampton The Deansway	0755 0611 0650 0748			

## Problem Vehicles

There have been instances where vehicles have been parked in various parts of the Parish for extended periods of time and residents have complained to both the Parish Council and the Police about them.

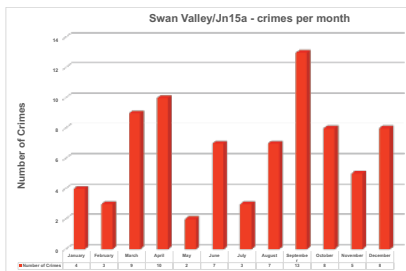
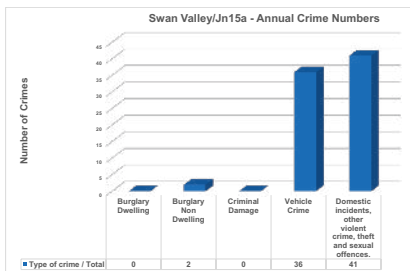
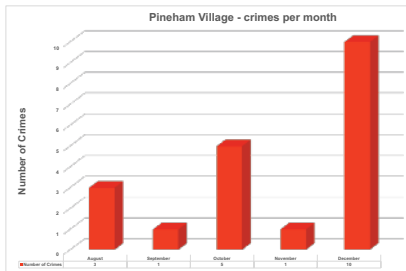
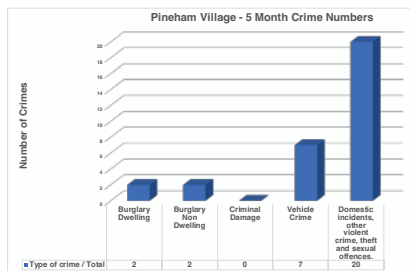
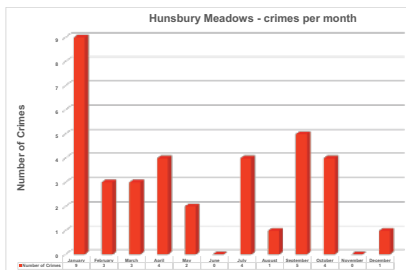
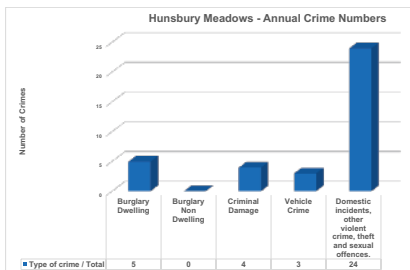
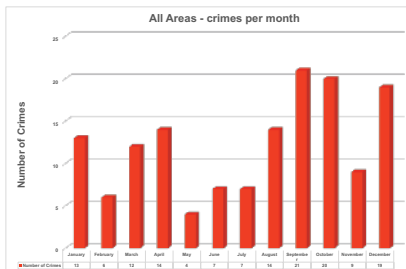
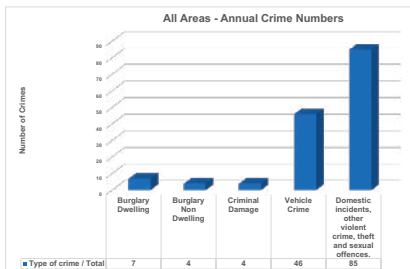
If the vehicle is parked legally and not causing an obstruction then there is **NOTHING** the Parish Council or Police can do about it. Even if the vehicle has no tax, MOT or insurance the Police cannot act without instruction from the DVLA or unless the tax is more than 61 days out of date. If the police catch the vehicle driving that is a different situation.

On some developments there may be a Restrictive Covenant regarding parking in place between the developer and residents,, these only apply if the owner of the vehicle is a homeowner on the estate.

The Parish Council is not party to these Covenants and has no power to act in these situations.

# Crime Figures

The police have been providing the Parish Council with the crime figures for the Hunsbury Meadows residential areas, the Swan Valley Industrial estate and the south bound motorway service area at Jct 15a for the whole of 2018 and for Pineham Village from August 2018.



# Canal News

The canal towpath over Wotton Brook was resurfaced by the Canal & Rivers Trust and Inland Waterways Association (IWA) over last summer.

This resurfacing has been a great success and even through the wettest of weather the towpath surface has remained firm.



There have been many compliments on the work and the improvement that this has made to walking along the canal. The Parish Council would again like to express its thanks to the volunteers who carried out the work.

Also during the last year the IWA also worked with local school children to design and paint the mural on one side of the bridge under the M1. The plan is for the other side of the bridge to be painted later on in the year. Also during the last year the Nature Trail of mosaics from Lock 1 to 17 was opened.



The plan is for the other side of the bridge to be painted later on in the year. Also during the last year the Nature Trail of mosaics from Lock 1 to 17 was opened.

The volunteers also carried out the vegetation clearance of the lock by-pass weirs and channels, a large winter litter pick at the Northampton end of the canal, fence repairs in the M1 motorway area and lock painting. Over 40 Task Parties were run which clocked up 2300 volunteer hours.

The IWA have been well supported by Cummins Power Systems, Santander and Network Rail both in their attendance of volunteers and their donations.

Also planned for later on in 2019 is the installation of information panels near to Locks 1, 14 and 17.

Further information can be found at: [www.waterways.org.uk/northampton/](http://www.waterways.org.uk/northampton/)

# Dogs



Can we please ask that dog owners clear up after their dogs. The Parish Council have provided six dog bins and two general waste bins in the Parish and we are currently assessing sites for more bins. **Remember all bins can be used for all types of waste.**

## PLEASE DO NOT THROW BAGS OF DOG WASTE INTO THE HEDGEROWS

In a recent Newsletter we asked residents not to leave filled dog waste bags in hedgerows and paths. Sadly this practice has started again along the canal towpaths where filled black bags are again being thrown in to the hedge and the hedgerow bottoms.

Bags that are thrown into the hedge take years for the plastic to degrade, look terrible and are an ongoing health hazard, never mind adding to the problem of plastic pollution.

## Tip.... "Stick and Flick"

If you are walking along the canal towpath or anywhere where there are bushes and ditches - use dog bags to pick up the mess and simply throw it in to the bottom of the ditch / hedgerow. Turn the used bag inside out, knot at the top and pocket it until you can put it in a bin.

This is a method National Trust properties sometimes use to avoid dog bins in country areas that cannot be maintained. It works and causes no offence or danger to anyone.



# Community Meeting

Our County Councillor, Pinder Chauhan, will be holding a Community Surgery on the 25<sup>th</sup> April from 6pm at Pineham Barns School, in conjunction with the Chair of Governors. The Parish Council will be represented, and it is hoped to have representatives from our local policing team, fire safety, Neighbourhood Watch and our Borough Councillors attending.

Also invited will be Mr Mike Caddy who will be able to speak to residents and the Parish Council about the detail around setting up a resident's managed agency and the pros and cons around this.

# Litter Bins for Pineham Village

We are aware that there are no dog or general waste bins in Pineham Village and that there is a growing issue with both dog mess and litter.

We have started discussions with the Borough Council on the process of buying and installing new bins and adding them to the collection routes.

We cannot legally start purchasing anything until the boundary change has occurred but we will be canvassing views on where bins should be located.



**Sunshine WINDOWS**  
WINDOW CLEANING  
Traditional methods hands on!!  
Window Sills & Frames Included  
Reliable and friendly service.

**Looking for a window cleaner?  
Call Rich today for a FREE quote**

**07856 593775**  
Email: [sunshinewindownorthants@gmail.com](mailto:sunshinewindownorthants@gmail.com)

**Sunshine EXTERNAL VALETING**  
Pressure Washing of Driveways • Patios  
Timber Decking • Garden Furniture  
Conservatory Roofs • Garage Doors  
Fascias • Soffits • Guttering



# Council Elections

In February 2019 John Kwijuka was co-opted on to the Council. John is a resident of Pineham Village, which means we now have two Councillors from the new area of the Parish and we're sure he will be a valuable addition to the Council helping represent our new parishioners.

This does mean that we now have a full compliment of Councillors, however vacancies do arise periodically so if you are interested in becoming a Parish Councillor let our Clerk know so we can contact you.

Alternatively you can stand in the next Parish Council elections which will be held in 2020.

# Electoral Registration

Who knows whether there will be any elections or referenda within the next twelve months. One thing is certain; if you are not on the electoral list, you will not be able to vote. Now is the time to check. If you are not sure, and this particularly applies to all of our newest residents in Pineham, contact the Guildhall Electoral Registration or check on-line.

# Council Precept

Each financial year the Parish Council levies a local tax called a precept on the Borough Council as to how much money it needs to provide its services for the coming financial year. This in turn is calculated by the Borough Council in terms of a Council Tax charge on your property and expressed as "a Band D" equivalent. The amount a household actually pays depends on your Council Tax banding.

For the last two years the Parish Council has kept the Precept constant at £14,695 which equates to a Band D equivalent of £29.07 per annum.

With the change in the Parish boundaries on the 1<sup>st</sup> April 2019 and the almost doubling of the size and number of households in the Parish the Parish Council will be increasing the Precept to £24,700. At time of printing this is still expected to equate to a Band D equivalent of £29.07 per annum.

This means that in real terms the precept has decreased over the last three years.

The Parish Council will be monitoring closely expenditure through out the year and reassessing our financial requirements in the expanded Parish.

Information on the amount that you pay can be found on your annual Council Tax bill.

# Helping **YOUR** Community

## ADVERTISE IN THIS NEWSLETTER

The Parish Council is keen to provide a facility for local tradesmen, businesses or charities to advertise in this newsletter which is distributed to every household in the Parish, whilst at the same time helping the Council to reduce production costs.

Adverts are available from £24 per issue,  
please contact the Council to discuss your requirements  
[clerk@hunsburymeadows.org.uk](mailto:clerk@hunsburymeadows.org.uk)

# Who to Contact with an Issue

## Police/Crime

In an emergency ring 999. In non urgent situations use 101. However it can take time to be answered so it may be easier to do it online.

### Reporting a crime:

<https://www.northants.police.uk/webform/report-crime>

### Reporting intelligence:

<https://www.northants.police.uk/webform/intelligenceinformation-giving-form>

### Suspicious circumstances:

<https://www.northants.police.uk/webform/suspicious-activity>

### Action Fraud:

<https://www.actionfraud.police.uk/>



## Report a faulty street light

[http://www.lightingnorthamptonshire.com/report\\_fault.aspx](http://www.lightingnorthamptonshire.com/report_fault.aspx)

## Borough Council issues such as:

- Litter
- Fly Tipping
- Bus stop/street sign cleaning
- Dead Animal
- Dog Fouling
- Flyposting
- Graffiti
- Leaf Clearance
- Litter bin overflowing
- Weed Clearance
- Broken Glass

<http://selfserve.northampton.gov.uk/mycouncil/reportit.html>

# Anti-social Behaviour

If you are the subject of anti-social behaviour, or a problem has been identified within the community you live, what options are open to you?

If you feel that you are the best person to resolve the issue then do so when you are calm as tempers can easily flare and cause the issue to become more serious, rather than help you to agree an amicable solution.

If people fail to listen to your concerns, or show a less than responsible attitude towards you, then the issue will require another form of intervention.

If the problem is occurring on a daily or frequent basis, it will assist the police or other agencies if relevant information referring to the problem is kept in diary form. This should include times, dates and the nature of the incident, and if known, the identity of the offender and how it made you feel at the time.



## Organisations

**Housing associations:** If the person who is causing a problem is a council tenant, consider consulting with the housing provider.

### Borough or County Councils:

Environmental Health and Community Safety departments are located within the councils across the county and can provide advice regarding persistent noise nuisance, air pollution and public health issues.

This is not an area that the Parish Council can become involved in.

# Cycleways

## Stagger Gates

Over the last 18 months the Parish Council and in particular Cllr. Caunt have been working to get the safety stagger gates on the cycleway from Upton Valley Way East down to the canal towpath and the footpath/cycleway to the Green Bridge repaired.

After much emailing, calling and discussion it was established that Northamptonshire County Council are responsible for the maintenance of the cycleway as part of the original joint funding agreement with Sustrans.

We are expecting the sole remaining barrier gate to be removed and a series of staggered high visibility bollards will be installed which are more cyclist friendly in an unlit area, an example of which is shown below.



## Brambles

Along the footpath/cycleway to the Green Bridge there are two large patches of brambles that have been steadily been overgrowing the pathway. The Parish Council have been in dialogue with the Borough Council and it has been agreed that an emergency cut back will take place before the bird nesting season.

We will be looking to contact the land owner to try and arrange a more permanent removal of the brambles to prevent a recurrence of the problem.

# Neighbourhood Watch

In 1983, Northamptonshire Police set up a Neighbourhood Watch scheme which was seen as one of the first in the country. Five years later, in 1988, the Northamptonshire Neighbourhood Watch Association was formed to establish and run the scheme as an independent organisation.

The main aims are to prevent crime, reduce the fear of crime, improve safety, and encourage neighbourliness and a supportive spirit across our communities. That means that whilst combating crime remains the core aim, the scheme helps out in other important ways to help protect our communities, such as supporting the elderly and vulnerable.

Neighbourhood Watch promotes good citizenship and greater public awareness through Neighbourhood Watch groups; increases public participation in the prevention and detection of crime and anti-social behaviour; reduces the fear of crime; improves police/community liaison, and increases public and community safety.

Encouraging and empowering people to look out for each other: crossing barriers of age, race and background to create strong, safe and cohesive communities that benefit everyone.

There are several schemes within our Parish/area including one recently set up in Pineham Village, scheme number NSW117, details of how to join the schemes can be found using the links below.

Please visit the following links to find out more information about schemes in your area and information on how to set up your own scheme.

<http://www.northantsnhw.co.uk/>  
<https://www.ourwatch.org.uk/>  
<https://www.ourwatch.org.uk/knowledge/setting-up-a-neighbourhood-watch-scheme/>

# USEFUL NUMBERS

## Emergency Numbers

Police, fire or ambulance	999
Electricity	0800 028 0247
Gas (24 hr)	0800 111 999
Water (24 hr)	08457 145145
The Samaritans	08457 90 90 90
Social Services (out of hours)	01604 626938

## Advice & Information

Age UK	01604 611200
Alcoholics Anonymous	0845 7697555
Citizens Advice Bureau	0844 4111 4444
Crime Stoppers	0800 555 111
National Drugs Helpline	0800 776600
NHS 111	111
General Hospital	01604 634700
Sleeping Rough	01604 629804
Community Law Service	01604 621038

## USEFUL WEBSITES

### Non-Urgent Crime

<https://www.northants.police.uk/webform/report-crime>

### Report Rubbish & Graffiti online

<https://www.northampton.gov.uk/info/259/environmental-health>

### Report problems with Potholes

#### Street signs etc. online

<http://www.northamptonshire.gov.uk/en/councilservices/Transport/roads/StreetDoctor>

## Northampton Borough Council

All Council Services  
(Standard Rate) 0300 330 7000

Waste and recycling collections are provided for Northampton Borough Council by Veolia recycling@northampton.gov.uk or visit [www.northampton.gov.uk/recycling](http://www.northampton.gov.uk/recycling)

## Out-of-hours

Stray dog out-of-hours 01604 837999  
To report other complaints e.g. noise, please leave a message on 01604 838000. This will be dealt with on the next working day.

## Northamptonshire County Council

Switchboard 0300 1261000  
School Transport 01604 236132  
Street Doctor (Roads/Lighting) 0845 6011113  
Trading standards 08454 040506

## Ways to keep in touch with us:

Website: [www.hunsburymeadows.org.uk](http://www.hunsburymeadows.org.uk)

Email: [clerk@hunsburymeadows.org.uk](mailto:clerk@hunsburymeadows.org.uk)

Phone: 01604 891033 / 07876 016581

Clerk: Mr Lalitkumar Patel, 52 Meadow Lane, Little Houghton, Northampton NN7 1AH



Facebook: Hunsbury Meadows  
Twitter: @HunsburyMeadows